

# Spring 2013 Meeting of the Natural Area Advisory Committee

18 April 2013, NATL Academic Pavilion, 4:10 - 5:05 pm

Recorded by Lary Reeves and Amanda Abel

## **In attendance:**

Amanda Abel (NATL Graduate TA)

Morgan Conn (NATL Graduate TA)

Mark Clark (Soil and Water Science)

Jaret Daniels (FLMNH)

Jennifer Gillett-Kaufman (NAAC Chair, Department of Entomology and Nematology)

Sam Hart (Undergraduate TA)

Chris Holderman (Department of Entomology and Nematology)

Anna Normand (Wetlands Club)

Jack Putz (Department of Biology)

Lary Reeves (NAAC vice-chair, Department of Entomology and Nematology)

Beverly Sensbach (FLMNH)

Tom Walker (Friend of NATL, Department of Entomology and Nematology)

Elizabeth Wells (Undergraduate TA)

## **4:10 PM**

### **1. FY 2012 Budget Update (Jennifer)**

The 2012-13 NATL Fiscal Report is attached as Appendix 1.

### **2. Draft of 2013-2014 Spending Plan (Jennifer Gillett-Kaufman)**

Attending NAAC members unanimously approved the 2013-2014 Spending Plan as the basis for spending decisions between 1 July 2013 and the Fall 2013 NAAC Meeting. The 2013-14 NATL Fiscal Plan is attached as Appendix 2.

### **3. NAAC Membership (Jennifer)**

NAAC membership was discussed to ensure that its members participate and remain representative of the university units actively using the Natural Area. New members and methods for increasing participation are under consideration. Current members who are inactive and department chairs will be contacted to find replacements for inactive members or identify interested new members. New members will be invited to the Fall meeting. Lary Reeves was unanimously approved by attending NAAC members to become NAAC vice chair.

### **4. SEEP Washout Update (Jennifer)**

For over a year, storm water runoff from the Cultural Plaza parking lots and lacrosse field has created a washout in the Natural Area Park. Since then, it has been a safety concern. Following unsuccessful small-scale attempts to mitigate the problem, PPD has worked to remodel the afflicted area by installing a drainage field and concrete culvert leading into SEEP. Despite this effort, the issue is not yet fully resolved. Currently, PPD is working to design a functional method for routing water into SEEP. Funding to fix the washout is being supplied by the UF Athletic Association.

### **5. Technology Fee Proposal (Jennifer)**

NATL's Technology Fee Proposal seeks to 1) institute a Wi-Fi signal in the 20+ open acreage NATL-west public area of the lab and as far into the wooded area as possible; 2) implement two webcams in both the public and private areas of NATL to be used by teachers and researchers; 3) employ a "Bring Your Own Device" program to facilitate interactive, live tours of NATL; 4) update the NATL Website to include information about the three resources provided by the Technology Fee.

## **6. Website Update (Jennifer)**

Since the beginning of the year, 3 new pages have been added to the website: UF Academic Use, Public Use, Family Fun and K-12 Education. These pages are accessible via the new menu bar located at the top right corner of every page. Additionally, a donations page was created which can be accessed via the "Make a Gift" link.

## **7. Vote on Proposal by Karen Bailey (Jennifer)**

Karen Bailey, a graduate student in the Department of Wildlife Ecology and Conservation, submitted a proposal to trap and handle small mammals in NATL. She obtained IACUC approval for handling the animals she plans on studying. There should not be any long-term ecological impacts. The NAAC members in attendance unanimously approved the proposal.

## **8. Introduction to Morgan Conn- NATL's New Graduate TA (Jennifer)**

Morgan received an undergraduate degree in Wildlife Ecology and Conservation at UF and will be beginning a work towards a master's degree in Entomology this summer. She has been volunteering with NATL since the summer of 2012 and began working for NATL in the fall of 2012.

## **9. Volunteer Update (Amanda Abel)**

Since the last NAAC meeting in September 2012, NATL has hosted a number of volunteer events. Volunteers at these events worked on coral ardisia control, trash removal, vine clearing and wood removal in the upland pine area. These events brought 62 volunteers who worked a total of 96 hours. In addition, Tom Walker, Ken Prestwich and Chris Johns collectively donated 381 hours of their time to NATL. A summary of volunteer hours is attached as Appendix 3.

## **10. People Counter Update (Amanda)**

Three TrailMaster units are installed at NATL's Academic, Cultural Plaza and Natural Area Park Entrances. These units measure NATL usage by counting the number of people passing through each of the three entrances. The Cultural Plaza Entrance has had a TrailMaster installed since July 2010, however initial technical difficulties yielded unreliable data in the first few months. Subsequently, two additional units were installed at the Academic Entrance (June 2011) and Natural Area Park Entrance (April 2012). Figure 1 summarizes information collected by the TrailMaster units in 2012 and 2013. Figure 2 summarizes all reliable information gathered by the TrailMaster units since December 2010. Because most NATL visitors are counted twice (as they enter and exit), all counts are divided by two in order to estimate the number of visitors NATL receives. A summary of TrailMaster counts for 2010 through 2013 and a summary of NATL usage estimates are attached as Appendix 4.

## **11. Rain Monitoring Update (Amanda)**

In March 2013, Mark Clark donated a data logging rain gauge which records rain with a tipping bucket rainfall collector. The data logger also records temperature. The rain gauge was installed next to the milk can rain gauge on the west side of SEEP. Data collected will be posted on the NATL website shortly.

## **12. New kiosk signs and scavenger hunts (Lary Reeves)**

The new kiosk content for the Thomas J. Walker Kiosk located on division trail was presented. To enhance visitor interaction with NATL and its wildlife, seasonal scavenger hunts were developed by Lary Reeves. These scavenger hunts are illustrated and laminated and serve to highlight wildlife and plants that can be relatively easily observed in NATL during a particular season. These scavenger hunts will be made available to visitors via the front desk of FLMNH and Department of Entomology and Nematology and through the NATL teaching assistants.

## **13. Facebook and Twitter update (Elizabeth Wells)**

NATL's Facebook page currently has 419 "likes" by the public and numerous followers who are public and private organizations, while the Twitter account has 281 followers.

**14. Botany Update (Sam Hart)**

Since Sam began working for NATL, he has added to the biota list 4 new forbs, 8 new vines, and 2 new grasses.

**15. Current Status of Invasive Plants (Tom Walker)**

Control of invasive plant species continues to be a high priority at the Natural Area. Much progress has been made in controlling invasive plants, including significant reductions in populations of coral ardisia, skunkvine, air potato and cogongrass.

**16. Restoration of Upland Pine (Tom)**

Preparation for a prescribed burn has involved clearing fallen logs and bush hogging. If conditions permit, the burn will be happening at the end of April or beginning of May. Following the burn, wiregrass plugs will be planted.

**17. Next NAAC meeting date and time. 4:00, Thursday September 5th, 2013.**

Attending members unanimously approved 4:00 PM on Thursday, 15 September 2013 as the time and date of the Fall NAAC Meeting.

**18. Group photo**

The group photo of attending NAAC members is attached as Appendix 5.

**5:05 PM Meeting adjourns**

**Appendix 1**

**Fiscal report for 2012-2013**

| NATL Fiscal Plan for FY 2012-13   |                    | 18 Apr 2013 Report for FY 2012-13 |   |
|---|--------------------|-----------------------------------|---|
| Approved  | September 20, 2012 |                                   | What is in red are changes through 30 Jun 2013          |
|   |                    | <b>Receipts</b>                   |   |
|   |                    | Already received                  | <b>Projected</b>  |
| <b>Funds available for 2012-13, excluding stipends for Graduate TAs*</b>                          |                    |                                   |   |
| Brought forward from 2011-12  | 916                | 916                               | 916   |
| Projected income for 2012-13  |                    |                                   |   |
| Provoost  | 6,000              | 6,000                             | 6,000   |
| NATL endowment  | 4,625              | 4,638                             | 4,638   |
| Sum   | 10,625             | 921                               | 921 Online donations (as of April 1, 2013)              |
| <b>Grand Total</b>  | <b>\$11,541</b>    | 12,475                            | <b>12,475</b>   |
| <b>Spending plan for 2012-13</b>  |                    | <b>Expenditures</b>               |   |
|   |                    | Already spent or encumbered       | <b>Projected</b>  |
| OPS   |                    |                                   |   |
| Undergraduate TA  | 4,322              | 3,000                             | 4,322   |
| Control of Invasives  | 2,640              | 2,000                             | 2,640   |
| Sum   | 6,962              | 5,000                             | 6,962   |
| OE  |                    |                                   |   |
| Miscellaneous expenses  | 2,200              | 2,200                             | 2,600 includes chainsaw safety class and mower repair   |
| Upland pine restoration   | 900                | 1,600                             | 1,600 includes hiring of Sam Hart and new burn master   |
| 2000 NT filters   | 474                | 300                               | 300 printed through Ento graphics dept at reduced price |
| 2 minigrants @\$500 each  | 1,000              | 1,000                             | 1,000   |
| Sum   | 4,574              | 5,100                             | 5,500   |
| To be carried forward   |                    |                                   |   |
| <b>Grand Total</b>  | <b>\$11,536</b>    |                                   | <b>12,462</b>   |
|   |                    |                                   | 13  |
| <b>NATL improvement fund (from online donations)</b>  |                    |                                   |   |
| Brought forward from 2011-12  | 2,921              |                                   |   |
| * The Provoost and the CALS Dean will each pay the stipend for a NATL Graduate Teaching Assistant |                    |                                   |   |

**Appendix 2**  
**Fiscal plan for 2013-2014**

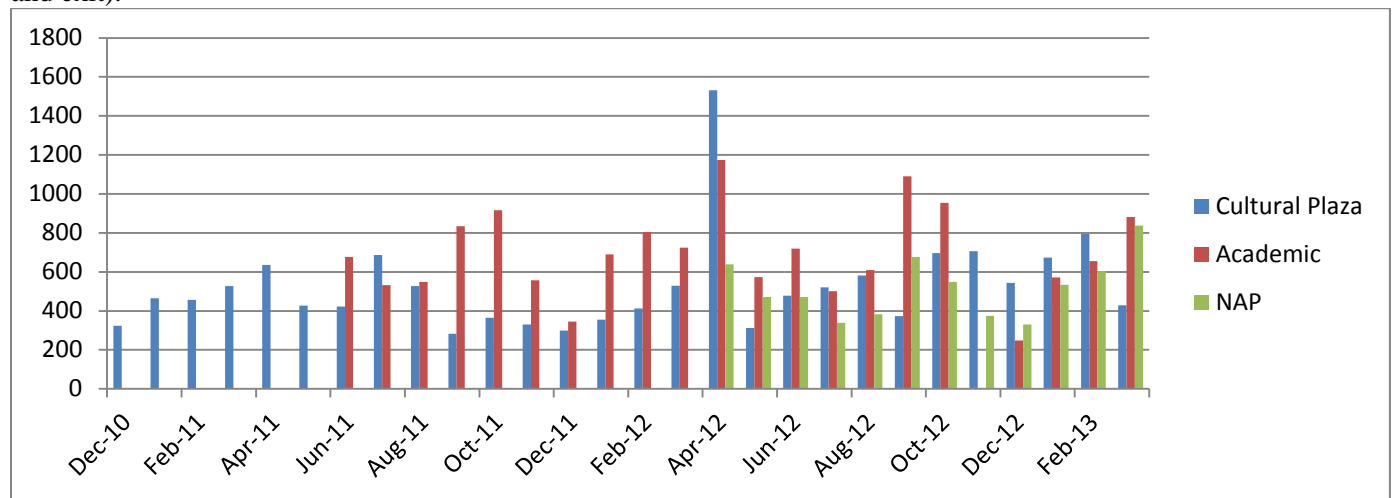
| <b>NATL Fiscal Plan for FY 2013-14</b>   |                 | <b>Comments</b>   |
|--|-----------------|---|
| ion to be approved at Fall meeting   |                 |   |
| <b>available for 2012-13, excluding stipends for Graduate TAs* .</b>   |                 |   |
| Brought forward from 2012-13   | 0               |   |
| Projected income for 2012-13   |                 |   |
| Provost  | 6,000           | Assumes no change   |
| NATL endowment   | 4,625           | Assumes no change   |
| Sum  | 10,625          |   |
| <b>Grand Total</b>   | <b>\$10,625</b> |   |
| <b>g plan for 2012-13</b>  |                 |   |
| OPS  |                 |   |
| Undergraduate TAs  | 4,322           | Experienced help, 8 hrs/week<br>(does most of routine maintenance of nature trails)                         |
| Control of Invasives   | 1,320           | Invasive specialist, 2 hrs/week<br>(1/2 of what was allocated in 2012-13)                                   |
| Sum  | 5,642           |   |
| OE   |                 |   |
| Miscellaneous expenses   | 2,200           |   |
| Upland pine restoration  | 1,300           | Continues efforts to restore 13 acres of longleaf pine ecosy<br>(\$400 increase from 2012-13 for wiregrass) |
| 2000 NT filers   | 300             | Based on last year's price  |
| 2 minigrants @\$500 each   | 1,000           | Program attracts student proposals to fulfill NATL needs  |
| Sum  | 4,800           |   |
| <b>Grand Total</b>   | <b>\$10,442</b> |   |
| To be carried forward  | \$183           |   |
| <b>provement fund</b> (from online donations)  |                 |   |
| Brought forward from 2011-12   | 2,921           |   |
| <p><b>The Provost and the CALS Dean will each pay the stipend for a NATL Graduate Teaching Assistant</b></p> |                 |   |

**Appendix 3**  
**Summary of Volunteer Hours**

|                                  |                  |
|----------------------------------|------------------|
| Miscellaneous Volunteer Projects | 96 hours         |
| Chris Johns                      | 63 hours         |
| Tom Walker                       | 298 hours        |
| Ken Prestwich                    | 20 hours         |
| <b>Total</b>                     | <b>477 hours</b> |

**Appendix 4**

**Figure 1.** Summary of TrailMaster counts for 2010 through 2013 at the Cultural Plaza, Academic and NAP entrances (all numbers are TrailMaster counts/2 because most users are counted twice, as they enter and exit).



**Figure 2.** Summary of NATL usage estimates via TrailMaster counts (all numbers are TrailMaster counts/2 because most users are counted twice, as they enter and exit).

|            |      | Jan | Feb | Mar | Apr | May | Jun | Jul | Aug | Sep | Oct | Nov   | Dec   | Total |
|------------|------|-----|-----|-----|-----|-----|-----|-----|-----|-----|-----|-------|-------|-------|
| <b>CPE</b> | 2010 |     |     |     |     |     |     |     |     |     |     |       | 324   | 324   |
|            | 2011 | 465 | 457 | 528 | 636 | 428 | 422 | 686 | 527 | 283 | 366 | 330   | 300   | 5428  |
|            | 2012 | 356 | 412 | 529 | 153 | 313 | 478 | 521 | 582 | 373 | 697 | 706   | 543   | 7042  |
|            | 2013 | 673 | 796 | 428 |     |     |     |     |     |     |     |       |       |       |
| <b>AE</b>  | 2011 |     |     |     |     |     | 676 | 533 | 549 | 835 | 916 | 558   | 346   | 4413  |
|            | 2012 | 689 | 804 | 725 | 117 | 573 | 720 | 502 | 609 | 109 | 955 |       | 249   | 8091  |
|            | 2013 | 572 | 656 | 883 |     |     |     |     |     |     |     |       |       | 2111  |
| <b>NAP</b> | 2012 |     |     |     | 639 | 471 | 472 | 321 | 384 | 677 | 549 | 375   | 331   | 4219  |
|            | 2013 | 534 | 605 | 838 |     |     |     |     |     |     |     |       |       | 1977  |
|            |      |     |     |     |     |     |     |     |     |     |     | Grand | total | 35502 |

**Appendix 5**  
**Group photo**

