

## **Minutes of meeting of Natural Area Advisory Committee: 28 August 2007**

Tuesday, 4 to 5:15pm, NATL pavilion. Members present were Mark Clark (chair), Donald Dickson, Donald Graetz, Shibu Jose, Doug Levey, Erik Lewis, Alan Long, Marilyn Martin, and Tom Walker (admin. asst.). Also present were Chandler Rozear (PPD Project Manager for NATL fences and boardwalk) and Kevin Ratkus (NATL Teaching Assistant).

### **1. Approval of minutes of special meeting**

The minutes of the 22 Aug 2007 special NAAC meeting were unanimously approved as submitted. They will be posted at <http://natl.ifas.ufl.edu/ann-mins.htm>.

### **2. Final approval of revised Operating Policies**

The Committee voted unanimously to approve the revised NAAC Operating Policies that were emailed to NAAC on 13 Aug 2007 and initially approved at the special meeting of 22 Aug 2007. The new operating policies took effect immediately and will soon be posted at <http://natl.ifas.ufl.edu/natlmgmt.htm#OpPolicies>.

### **3. Election results**

Chair Mark Clark announced that Doug Levey had been unanimously elected to a two-year term as NAAC Chair.

### **4. Proposal to make Ken Prestwich a member of NAAC**

In recognition of his continued interest in NATL and his devotion to restoring its upland pine, the Committee unanimously approved the proposal to make Ken Prestwich a member of NAAC.

### **5. Status of validation of NATL endowment by UF administration**

The terms of the NATL endowment require that the UF administration fund a NATL graduate teaching assistant and \$2,000 (in 2007 dollars) in annual NAAC expenses.

Chair Mark Clark reported that CALS Dean Kirby Barrick has pledged long-term support of the NATL TA even though the TA may not be a CALS student when the NAAC Chair is in a college other than CALS. However, Barrick stated that he intended to provide the funds through the School of Natural Resources and Environment graduate assistantship program, which would seem to mean that the student must be pursuing a degree in that school. Additional clarification is being requested regarding the assistantship to make sure there are no restrictions to a student's academic affiliation that would make them less or incompatible with the departmental affiliation of a NAAC Chair.

In an email of 14 Aug 2007 to Provost Fouke, Clark requested that she supply \$2000 for NAAC expenditures this fiscal year and explained that this level of support from somewhere in the UF administration is required for NAAC to receive the benefits of the NATL endowment. No reply has been received.

These matters need to be followed up prior to NAAC's annual report to the Lakes, Vegetation and Landscaping Committee early this fall.

## **6. Status of CITF projects: fences**

Chandler Rozear, Project Manager for the \$200,000 in CITF funds budgeted for fences, reported that the Physical Plant Division [PPD] had offered to do the work as a means of maintaining its work force in the face of a budget reduction of 46%. The Committee noted that what PPD would be paid to erect the fences should not exceed what an outside contractor would charge. Because the only estimates of NATL fencing costs by an outside contractor are outdated and might not have included the costs of clearing, it was suggested that a new outside estimate be sought. Rozear stated that he would get such an estimate in the next 2 weeks.

## **7. Status of CITF projects: nature trails**

Tom Walker provided a map (p. 4 of these minutes) showing the dates of completion or expected completion for the three upland nature trails, the SEEP trail, and their six kiosks. Each of the three upland trails has been operational for five or more months. The kiosk for the Hammock Nature Trail was completed early this month and the explanatory poster for that kiosk was installed 10 days ago. To complete the upland nature trails three more kiosks must be built and installed and the three posters that have been prepared for them must be printed.

Mark Clark reported that Callaway Marine Technologies, with a bid of \$89,900, was selected to construct the 500ft boardwalk that is an essential (and expensive) component of the SEEP Nature Trail. Subsequently, an unexpectedly deep area in SEEP was discovered along a portion of the route of the boardwalk. Because this may require that more of the boardwalk have railings than originally anticipated, Calloway Marine may request that UF pay for a change order. In addition, before the work can begin, UF Environmental Health and Safety and the St. Johns River Water Management District must approve the design of the boardwalk. If these matters are resolved soon, construction is expected to begin in early September and to be completed before the end of November.

The \$100,000 in CITF funds budgeted for NATL's four self-guided nature trails is insufficient to complete the trails in the manner planned. By reducing the quality of the signs for the SEEP trail, by counting on bountiful volunteer effort in building the approaches to the boardwalk, and by assuming that only the cost of materials will be needed to obtain the five remaining kiosks, the estimated shortfall for the nature trails can be reduced from about \$10,000 to about \$2,000.

## **8. New NATL pamphlet and information sheets for academic kiosk**

Tom Walker distributed an updated version of the pamphlet describing NATL that has long been freely available at the academic and NAP kiosks. The chief changes are that the front of the pamphlet bears an official looking "UF" instead of the words "University of Florida" and the back has a map of the self-guided nature trails instead of a list of NAAC members and their affiliations. No one suggested changes, so the new version will soon be substituted for the old at the two kiosks.

Updated items that are posted on the north side of the academic kiosk were reviewed and members were asked to suggest corrections and improvements. It was decided that doc files of all items would be made available to all members--to inform the members and to make it easy for them to suggest changes.

## 9. Report of NATL TA

Kevin Ratkus reported that on a Summer Plunge volunteer event he organized and led this summer. Some 32 students and 6 graduate supervisors planted about 1000 1-year, containerized long leaf pines and nearly as many wiregrass slips in the north block of the restricted-area upland pine. More of his Summer Semester activities are listed on p. 5 of these minutes.

## 10. Fiscal report for 2006-2007

Tom Walker distributed a list of credits and debits to the NAAC expense account starting on 27 Apr 2006 (Spring Semester 2006 meeting) to 28 Aug 2007 (Fall Semester 2007 meeting). The initial balance was \$542.99. During the period of the report, credits totaled \$2392.93 and debits totaled \$2910.35, leaving an ending balance of \$25.57. Details are on p. 6 of these minutes. Walker noted that about \$405 had been spent on nature trails from this account rather than being charged to CITF.

## 11. NAAC Fiscal Plan for 2007-2008

This fiscal plan was proposed and unanimously approved.

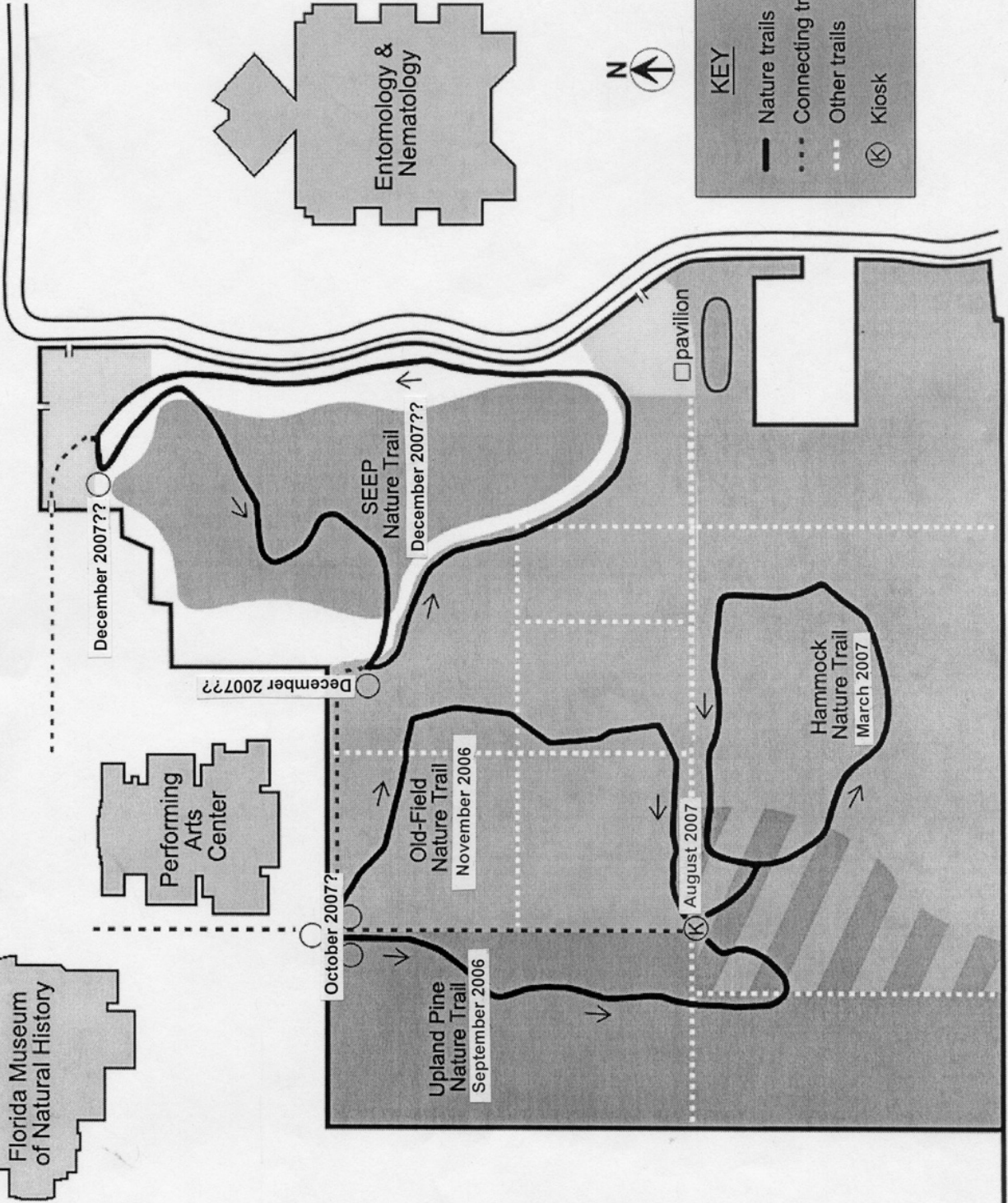
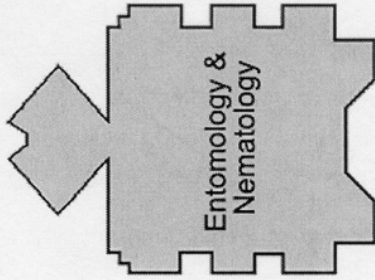
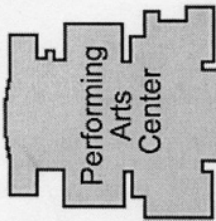
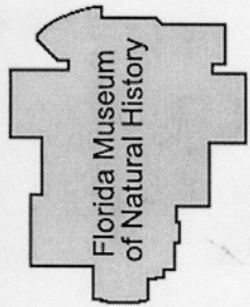
INCOME		\$3,000.00
Provost	2,000.00	
NATL endowment	0.00	
EYN endowment <sup>1</sup>	1,000.00	
EXPENSES		\$3,000.00
Develop self-guided nature trails	2,000.00	
Miscellaneous	1,000.00	

<sup>1</sup>The EYN endowment is for graduate education in the Entomology and Nematology Department, but during its first 10 years John Capinera, the fund administrator, can authorize use of some of the spendable income for support of NATL.

## 12. Transition of Chair to Doug Levey

Clark turned the meeting over to Doug Levey. Levey remarked he accepted the position of Chair for a term of two years and believes that a rotating position of Chair is the best way to insure NATL's continued success.

# NATL's Self-Guided Nature Trails



**KEY**

- Nature trails
- - - Connecting trails
- ... Other trails
- (K) Kiosk

## **NATL TA Summer '07 Summary**

- **Planted 2yr old containerized longleaf pine (NRAP)**
- **Spray invasive plant species (Cogongrass, Lantana, Noyau Vine, Japanese Climbing Fern, Arrow Vine)**
- **Summer Plunge volunteer event (32 students & 6 grad supervisors)**
  - **Planted 1yr 1,000 LLP & 1,000 wiregrass with 30 volunteers (NRAP)**
- **Maintained all of NATL trails (mowing & trimmed encroaching vegetation)**
- **Chain sawed downed trees**
- **Lined up fall term Gator Plunge volunteer event**
- **Refresh kiosk information (brochures, annual notices, large displays) & clean / re-varnish kiosks for fall term**
- **Patrol NATL tails for inappropriate use of site and clean trash from trail**
- **Process increment boars to age sweet gum trees**
- **Prep & assisted with NATL's 1<sup>st</sup> growing season prescribed fire (SRAP)**
- **Performed maintenance on Gator & Kee mower**
- **Update Dr. Clark & Dr. Walker of NATL activities**
- **Worked on GPS Maps**
  - **Old Field Soils**
  - **NATL Trails**
  - **LLP Restoration Map**

**Natural Area Advisory Committee Expense Account (Acct. NA-171 of EYN department)**

<b>Date</b>	<b>Item</b>	<b>Vender</b>	<b>Credits</b>	<b>Debits</b>	<b>Balance</b>	<b>Nature trails</b>
27-Apr-06	Brought forward from 27 April 2006 audit		542.99		542.99	
2-May-06	1000 wiregrass slips	Fla Div Forestry, Andrews Nursery		210.00	332.99	
5-May-06	dibble, hand pruners, flagging, flags	Forestry Suppliers		89.04	243.95	
15-May-06	balance transferred from NATL TA startup fund		1392.93		1636.88	
25-May-06	five 5-gal gasoline containers for watering pines	Lowe's		22.80	1614.08	
12-Jul-06	caps for nature trail stakes; Amdro for NAP	Lowe's		15.29	1598.79	
15-Jul-06	keys for EYN cages, chain oil	Lowe's		13.77	1585.02	
17-Jul-06	ink and paper for poster printing by EYN graphics	Mister Paper		179.05	1405.97	
17-Sep-06	paint, hand pruners, bowsaw	Lowe's		29.66	1376.31	
20-Sep-06	FS90 Stihl brushcutter and saw blade attachment	Sapp's Saw and Mower Shop		385.19	991.12	
4-Oct-06	1/2" electrical conduit for flag poles for UP mowing	Lowe's		63.04	928.08	
17-Oct-06	PVC pipe and fittings for 48 nature trail stakes	Lowe's		43.68	884.40	43.68
29-Oct-06	flags and flagging tape	Forestry Suppliers		57.14	827.26	28.57
6-Nov-06	printer ink	Mister Paper		22.99	804.27	
9-Nov-06	document boxes for nature trails	Office Depot		36.10	768.17	36.10
10-Nov-06	hand pruners	Lowe's		15.96	752.21	
11-Jan-07	re-bar for grid points	Lowe's		8.04	744.17	
14-Jan-07	file and cutter bar	Lowe's		39.71	704.46	
31-Jan-07	conduit for gridpoint flag poles	Lowe's		39.40	665.06	
31-Jan-07	flagging tape and PVC for grid stakes	Lowe's		13.78	651.28	
9-Feb-07	conduit for gridpoint flag poles	Lowe's		39.40	611.88	
22-Mar-07	trash bags for Ardisia and nature trail supplies	Lowe's		28.12	583.76	1.44
22-Mar-07	1000 longleaf seedlings and 1000 wiregrass slips	Fla Div Forestry, Andrews Nursery		370.00	213.76	
25-Apr-07	PVC pipe for nature trail stakes; 2-cycle oil	Lowe's		22.18	191.58	17.20
1-May-07	spar urethane for POI stake and NAP kiosk	Lowe's		11.98	179.60	11.98
4-May-07	paint Sharpies	Pam		10.74	168.86	
9-May-07	materials for tree signs in NAP	Lowe's		25.43	143.43	
16-May-07	ream of 24# legal paper for brochures	Pam		15.38	128.05	
19-May-07	materials for tree signs in NAP	Lowe's		33.43	94.62	
22-Jun-07	saw chain, bar oil, PVC pipe for stakes	Lowe's		27.32	67.30	
25-Jun-07	augmentation from EYN endowment		1000.00		1067.30	
27-Jun-07	day laborer, 8 h	Action Labor		109.36	957.94	
28-Jun-07	malathion and PVC pipe for stakes	Lowe's		18.37	939.57	
5-Jul-07	20 5-gal buckets for pine planting and Ardisia	Lowe's		99.60	839.97	
6-Jul-07	day laborer, 7 h	Action Labor		95.69	744.28	
12-Jul-07	hammer, bowsaw, orange flags	Lowe's		24.94	719.34	
25-Jul-07	flags, flagging tape, diameter tape, chem. Gloves	Forestry Suppliers		92.69	626.65	50.00
1-Aug-07	keys for NATL shed	Lowe's		7.35	619.30	
6-Aug-07	Lexan for kiosks	GE Polymershapes		457.51	161.79	200.00
6-Aug-07	100 plastic lamination sheets	Office Depot		44.99	116.80	
7-Aug-07	manual and tire repair for John Deere Gator	refund to TJW		53.30	63.50	
16-Aug-07	mounting hardware for hammock panel	Lowe's		15.78	47.72	15.78
17-Aug-07	12 ft 1x8 & hardware for new door to acad. kiosk	Lowe's		22.15	25.57	
		<b>Balance 28 Aug 2007</b>			<b>25.57</b>	
		<b>Approx. nature trail expenditures</b>				<b>404.75</b>
		<b>Totals</b>	<b>2392.93</b>	<b>2910.35</b>		