

Over 300 species of native bees live in Florida and the majority construct nests in the ground.

Common Ground-nesting Bees and Wasps in NATL

In forested habitats, ground-nesting bees and wasps are the most common pollinators.

COMMON BEE SPECIES



Striped Sweat Bee: *Agapostemon splendens*

Sweat bees are named because they are often attracted to the salts found in sweat. Most sweat bees are bright metallic green.



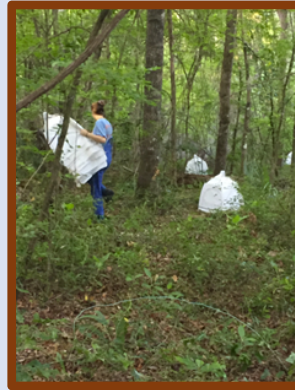
Sweat Bee: *Lasioglossum sp.*

Sweat bees are important pollinators for many crops such as sunflower and alfalfa. They nest underground, inside tree trunks, or in hollow wood.



Variegated Cuckoo Bee: *Epeolus zonatus*

The term "cuckoo" comes from this bee being cleptoparasitic: the female will lay her eggs on pollen masses made by other bees.



Soil emergent traps are a novel way to test where ground-nesting bees may be present in an ecosystem.

COMMON WASP SPECIES



Spider Wasp: *Anoplius sp.*

This wasp earns its name by feeding on arachnids. The wasp paralyzes its prey with its stinger. Luckily, these wasps are not typically aggressive towards people.



Velvet Ant: *Mutillidae*

Velvet ants are not ants but actually solitary wasps that are visitors of flowers. They receive their misnomer from the fact that females do not have wings.



Flower Wasp: *Tiphia sp.*

Adults drink nectar from flowers, but many species larva are parasitoids of beetle larvae, thus providing biological control of some pest species.

Author:

Grace Cope

Co-Author: Dr. Joshua Campbell

Pictures: Jeff Hollenbeck; Lynette Schimming; Sam Droege; Eric R. Eaton; Lyle Buss, University of Florida; Jon Hart