





Actual Weather (attach NWS Fire Weather Forecast, additional hourly forecast)			
	At Ignition	At Cessation	
In Stand Winds (1-3mph)			
Transport Wind (9-20mph)			
Mixing Height (1,700-6,500')			
Daylight Dispersion (>21)			
Night Dispersion			
Temperature			
Rel Humidity (30-55%)			
Fine Fuel Moisture (10-20%)			
Pre-Burn Checklist (initial each completed)			
	all prescription requisites met		
	authorization obtained		
	necessary local contacts made (local fire department, adjacent landowners, etc.)		
	burn warning signage posted at gate(s)		
	all equipment and staff on site and functional		
	all staff properly equiped (minimum PPE at discretion of burn manager)		
Crew Briefing (initial each completed)			
	burn objectives		
	burn boundaries		
	hazards discussed (containment issues, terrain features, etc.)		
	assignments made		
	ignition methodology discussed, contingency plan discussed		
	equipment location noted (fuel, water, tools, vehicles, vehicle keys, etc.)		
	authority confirmed and communications discussed		
	emergency procedures discussed (safe zones, contact information distributed, etc.)		
	questions requested		
	staff given opportunity to decline participation		
	Burn Manager Signature:		
	Permit Number / Date:		
	Permit Conditions (if any):		
Actual Ignition Methodology			
	Date:		
	Technique(s):		
	Flame Length/Intensity:		
	Equipment and Staff:		
BURN DE-BRIEF (TIMING, PROBLEMS, FOLLOW-UP ACTIONS):\n			

Legend

-  Burn Unit (10 Acres)
-  Kiosk
-  Roads/ Fire Breaks
-  Test Burn

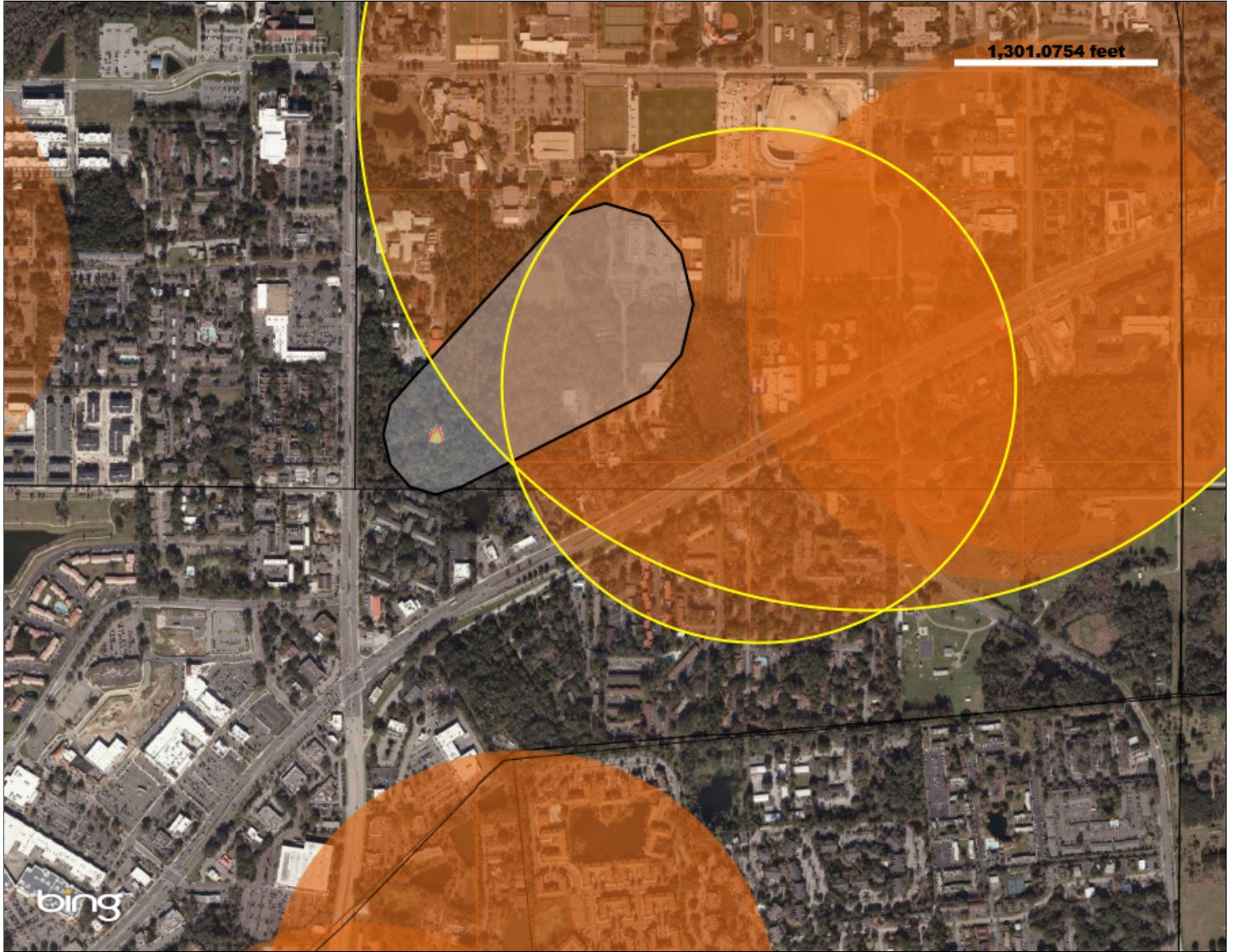


SW 34th St

121

SW 24th Ave





Smoke Sensitive Buffers (2)

Name Veterans Administration Medical Center
Type AIRPORT

Name SELECT SPECIALTY HOSPITAL - G'VILLE
Type HOSPITAL

thunderstorms. Lows in the lower 70s. Highs in the mid 90s.
 Minimum RH 48 percent. Light winds.
 .SATURDAY THROUGH SUNDAY...Partly cloudy with a 40 percent chance
 of showers and thunderstorms. Lows in the mid 70s. Highs in the
 mid 90s. Minimum RH 50 percent. Light winds.

\$\$

FLZ236-222230-
 Western Alachua-
 316 AM EDT Mon Jun 22 2020

	Today	Tonight	Tue
CLOUD COVER	McLEAR	Pcldy	Pcldy
CHANCE PRECIP (%)	0	0	30
WEATHER TYPE	None	None	Tstms
TEMP (24H TREND)	93 (+1)	71 (+3)	91
RH % (24H TREND)	42 (+2)	100 (+2)	51
20FT WND MPH (AM)	W 3		SW 4
20FT WND MPH (PM)	SW 7	SW 4	SW 8 G15
PRECIP DURATION			2
PRECIP BEGIN			8 AM
PRECIP END			8 PM
PRECIP AMOUNT	0.00	0.00	0.04
LAL	1	1	3
MIXING HEIGHT(FT-AGL)	5900	300	5700
TRANSPORT WND (MPH)	SW 14	SW 9	SW 13
DISPERSION INDEX	69	2	46
MAX LVORI		10	
STABILITY CLASS	3	6	4

.FORECAST FOR DAYS 3 THROUGH 7...

.WEDNESDAY...Mostly cloudy. A 30 percent chance of showers and
 thunderstorms. Lows in the lower 70s. Highs in the lower 90s.
 Minimum RH 47 percent. West winds 5 to 10 mph.
 .THURSDAY...Partly cloudy. A 30 percent chance of showers and
 thunderstorms. Lows in the lower 70s. Highs in the mid 90s.
 Minimum RH 51 percent. West winds around 5 mph.
 .FRIDAY...Partly cloudy. A 40 percent chance of showers and
 thunderstorms. Lows in the lower 70s. Highs in the mid 90s.
 Minimum RH 49 percent. Southwest winds up to 5 mph.
 .SATURDAY...Partly cloudy. A 40 percent chance of showers and
 thunderstorms. Lows in the lower 70s. Highs in the mid 90s.
 Minimum RH 52 percent. South winds up to 5 mph.
 .SUNDAY...Partly cloudy. A 50 percent chance of showers and
 thunderstorms. Lows in the lower 70s. Highs in the lower 90s.
 Minimum RH 57 percent. South winds up to 5 mph.

\$\$

FLZ136-222230-
 Eastern Alachua-
 316 AM EDT Mon Jun 22 2020

	Today	Tonight	Tue
CLOUD COVER	McLEAR	Pcldy	Pcldy
CHANCE PRECIP (%)	0	0	30
WEATHER TYPE	None	None	Tstms
TEMP (24H TREND)	94 (+2)	70 (+2)	91
RH % (24H TREND)	39 (-1)	100 (+1)	51
20FT WND MPH (AM)	W 3		SW 4
20FT WND MPH (PM)	SW 7	SW 4	SW 8 G15
PRECIP DURATION			2
PRECIP BEGIN			8 AM
PRECIP END			8 PM
PRECIP AMOUNT	0.00	0.00	0.05
LAL	1	1	3
MIXING HEIGHT(FT-AGL)	6400	300	5200
TRANSPORT WND (MPH)	SW 14	W 9	SW 13
DISPERSION INDEX	69	3	43
MAX LVORI		9	
STABILITY CLASS	3	6	4

.FORECAST FOR DAYS 3 THROUGH 7...

.WEDNESDAY...Partly cloudy. A 30 percent chance of showers and
 thunderstorms. Lows in the lower 70s. Highs in the lower 90s.
 Minimum RH 46 percent. West winds 5 to 10 mph.
 .THURSDAY...Partly cloudy. A 30 percent chance of showers and
 thunderstorms. Lows in the lower 70s. Highs in the lower 90s.
 Minimum RH 51 percent. West winds 5 to 10 mph.
 .FRIDAY THROUGH SATURDAY...Partly cloudy with a 40 percent chance
 of showers and thunderstorms. Lows in the lower 70s. Highs in the
 mid 90s. Minimum RH 49 percent. South winds around 5 mph.
 .SUNDAY...Partly cloudy. A 50 percent chance of showers and
 thunderstorms. Lows in the mid 70s. Highs in the lower 90s.
 Minimum RH 56 percent. South winds around 5 mph.

\$\$