

PRESCRIBED BURN PRESCRIPTION	
Natural Areas Teaching Laboratory - Entomology, UF/IFAS	
Compartment / Unit(s): Upland Pine - Public Area	
Burn Manager: Gage Daniel J LaPierre	Certification #: 1410003
Cell #: 352-362-4846	Customer ID #: 20195049
Landowner: UF/IFAS - Natural Areas Teaching Laboratory	
Address: Natural Area Dr, Gainesville, FL 32611	Phone: (352) 273-3901
Date/Time Prescription Prepared 06:30AM 07/15/2021 Thursday	
Planned Burn Ignition Date/Time 12:00PM 07/15/2021 Thursday	
Site Information	
State District (Phone): Wacasassa (352-395-4951)	
County: Alachua	Section / Township / Range: S12 T10S R19E
Acres: ~ 5.0	Last Burned: 1/1/2020
Boundary Lines: Description and distance(attach aerial photo indicating unit boundaries)	
Upland Pine - Public	
N - Mowed and Raked Firebreak 250 ft	
W - Mowed and Raked Firebreak 868 ft	
S- Mowed and Raked Firebreak 141 ft	
E - Mowed and Raked Firebreak 940 ft	
Community Type	Upland Pine Community (FNAI)
Overstory	Large Mature Longleaf, Scattered Hardwoods ~10-55 TPA
Understory	Light Fuels (Pine Needles, Grasses, Vines), patches of smilax and muscadine.
Soils	Ultisol - Apoka Series
Topography	Neutral Topography
Tons Fuel per Acre (Total/Available): NA	
General Purpose of Burn: Reduce Fuel Loads. Reintroduce Fire for Continuation of Groundcover Restoration	
Specific Burn Objectives: <15% crown scotch, <10% overstory tanning, >60% understory combustion	
Smoke Sensitive Areas	
Veterans Administration Medical Center	
UF Health Medical Lab – Medical Plaza	
SW 34th Street	
SW Archer Road	
Special Concerns	Protecting Kiosks within Burn Unit. Monitoring Smoke Dispersion. Total Mopup (Zero Smokers)
Evaluation of Anticipated Impacts on Smoke Sensitive Areas	Minor Impacts Due to Wind Direction and Acceptable Dispersion
Public Relations	Contacted All Neighbors, Fire Department, & Forest Service Public Relations Specialist Ludie Bond

Planned Burn Weather Conditions		
	Preferred	Forecasted
Wind Speed (mph)	3 - 15 mph E N NE	5 mph E
Wind Gust (mph)	3 - 25 mph E N NE	10 mph E
Transport Wind	5 - 25 mph E N NE	9 mph E
Mixing Height	1700' - 8000'	5200'
Sky Cover	<70%	<70%
Daylight Dispersion	30 - 70	47
Night Dispersion (8PM-7AM)	>1	1
Temperature	<100F	91
Rel Humidity	25% - 65%	51
Fine Fuel Moisture	10% - 25%	<25%
KBDI	100 - 500	<200
Stability (Turner)	>2	>3
Planned Ignition Methodology		
Season/Timing:	Wet-Summer Season	
Technique(s):	Backing Fire, Heading Fire, Flanking Fire, Ring Fire	
Desired Flame Length/Intensity:	<10', Low-Moderate Intensity	
Desired Rate of Spread	1-3 chains per hour	
Minimum Equipment and Staff:	Gator UTV with 25 gal Water Tank. 200 gal Water Trailer pulled by pickup. Six Staff with Handtools.	
Planned Contingencies & Mopup	Safe Zone Located East of Burn Unit in Old Field. Total Mopup (Zero Smokers) due to low night time dispersion	
Actual Weather Conditions (attach NWS Fire Weather Forecast, additional hourly forecast)		
	At Ignition	At Cessation
Wind Speed (mph)		
Wind Gust (mph)		
Transport Wind		
Mixing Height		
Sky Cover		
Daylight Dispersion		
Night Dispersion (8PM-7AM)		
Temperature		
Rel Humidity		
Fine Fuel Moisture		
KBDI		
Stability (Turner)		

Pre-Burn Checklist (Initial)	
	all prescription requisites met
	authorization obtained
	necessary local contacts made (local fire department, adjacent landowners, etc.)
	burn warning signage posted at gate(s)
	all equipment and staff on site and functional
	all staff properly equipped (minimum PPE at discretion of burn manager)
Crew Briefing (Initial)	
	burn objectives
	burn boundaries
	hazards discussed (containment issues, terrain features, etc.)
	Assignments Made
	Ignition Methodology Discussed. Contingency Plan Discussed
	Equipment Location Noted (Fuel, Water, Tools, Vehicles, Vehicle Keys)
	Authority Confirmed and Communications Discussed
	Emergency Procedures Discussed (Safe Zones, Contact Information Distributed)
	Questions Requested
	Staff Given Opportunity to Decline Participation
	Burn Manager Signature:
	Permit Number / Date:
	Permit Conditions (if any):
Actual Ignition Methodology	
	Date:
	Technique(s):
	Flame Length/Intensity:
	Equipment and Staff:
BURN DE-BRIEF (TIMING, PROBLEMS, FOLLOW-UP ACTIONS):\n	

POST-BURN MONITORING	
Following Day (Date):	
Overnight RH%:	
Overnight Wind Speed/Direction:	
Rainfall (inches):	
Smoke Drift Direction/Distance:	
Visible Flame?:	
Crown Tanning %:	
Crown Scorch %:	
Burn Coverage %:	
Estimated Duff Removal (inches):	
Following Month (Date):	
Rainfall (inches):	
Crown Cast %:	
Overstory Mortality %:	
Understory Mortality %:	
Following Year (Date):	
Rainfall (inches):	
Overstory Mortality %:	
Understory Mortality %:	
POST-BURN ANALYSIS	
Objectives Met?	
Suggestions for Improvement?	

Western Alachua-
326 AM EDT Thu Jul 15 2021

	Today	Tonight	Fri
CLOUD COVER	Pcldy	Pcldy	McLEAR
CHANCE PRECIP (%)	20	0	20
WEATHER TYPE	Tstms	None	Tstms
TEMP (24H TREND)	91 (+1)	70 (-1)	92
RH % (24H TREND)	52 (-6)	99 (-1)	47
20FT WND MPH (AM)	E 3 G7		SE 3 G7
20FT WND MPH (PM)	E 4 G8	E 3 G5	SE 3 G8
PRECIP DURATION	1		1
PRECIP BEGIN	12 PM		2 PM
PRECIP END	8 PM		7 PM
PRECIP AMOUNT	0.07	0.00	0.01
LAL	3	1	2
MIXING HEIGHT(FT-AGL)	5100	400	6000
TRANSPORT WND (MPH)	E 8	SE 5	E 6
DISPERSION INDEX	43	2	36
MAX LVORI		10	
STABILITY CLASS	3	6	3

.FORECAST FOR DAYS 3 THROUGH 7...

.SATURDAY...Mostly clear. Chance of showers and slight chance of thunderstorms. Lows in the lower 70s. Highs in the lower 90s. Minimum RH 50 percent. Southeast winds up to 5 mph.
.SUNDAY...Partly cloudy. A 40 percent chance of showers and thunderstorms. Lows in the lower 70s. Highs in the lower 90s. Minimum RH 56 percent. South winds up to 5 mph.
.MONDAY...Partly cloudy. Showers and thunderstorms likely. Lows in the lower 70s. Highs around 90. Minimum RH 60 percent. Southwest winds up to 5 mph.
.TUESDAY THROUGH WEDNESDAY...Mostly cloudy with showers and thunderstorms likely. Lows in the lower 70s. Highs in the upper 80s. Minimum RH 63 percent. Southwest winds up to 5 mph.

\$\$

FLZ136-152230-
Eastern Alachua-
326 AM EDT Thu Jul 15 2021

	Today	Tonight	Fri
CLOUD COVER	Pcldy	McLEAR	McLEAR
CHANCE PRECIP (%)	30	0	20
WEATHER TYPE	Tstms	None	Tstms
TEMP (24H TREND)	91 (+1)	70 (-1)	92
RH % (24H TREND)	51 (-7)	100 (0)	46
20FT WND MPH (AM)	E 3 G7		SE 3 G7
20FT WND MPH (PM)	E 5 G10	E 3 G7	E 5 G10
PRECIP DURATION	1		0
PRECIP BEGIN	12 PM		2 PM
PRECIP END	8 PM		6 PM
PRECIP AMOUNT	0.06	0.00	0.01
LAL	3	1	2
MIXING HEIGHT(FT-AGL)	5200	400	6000
TRANSPORT WND (MPH)	E 9	SE 5	E 6
DISPERSION INDEX	47	1	36
MAX LVORI		10	
STABILITY CLASS	3	6	3

.FORECAST FOR DAYS 3 THROUGH 7...

.SATURDAY...Mostly clear. A 20 percent chance of showers and thunderstorms. Lows in the lower 70s. Highs in the lower 90s. Minimum RH 48 percent. East winds around 5 mph.
.SUNDAY...Partly cloudy. A 40 percent chance of showers and thunderstorms. Lows in the lower 70s. Highs in the lower 90s. Minimum RH 54 percent. Southeast winds around 5 mph.
.MONDAY...Partly cloudy. Showers and thunderstorms likely. Lows in the lower 70s. Highs around 90. Minimum RH 60 percent. Southwest winds up to 5 mph.
.TUESDAY THROUGH WEDNESDAY...Mostly cloudy with showers and thunderstorms likely. Lows in the lower 70s. Highs in the upper 80s. Minimum RH 61 percent. Southwest winds up to 5 mph.

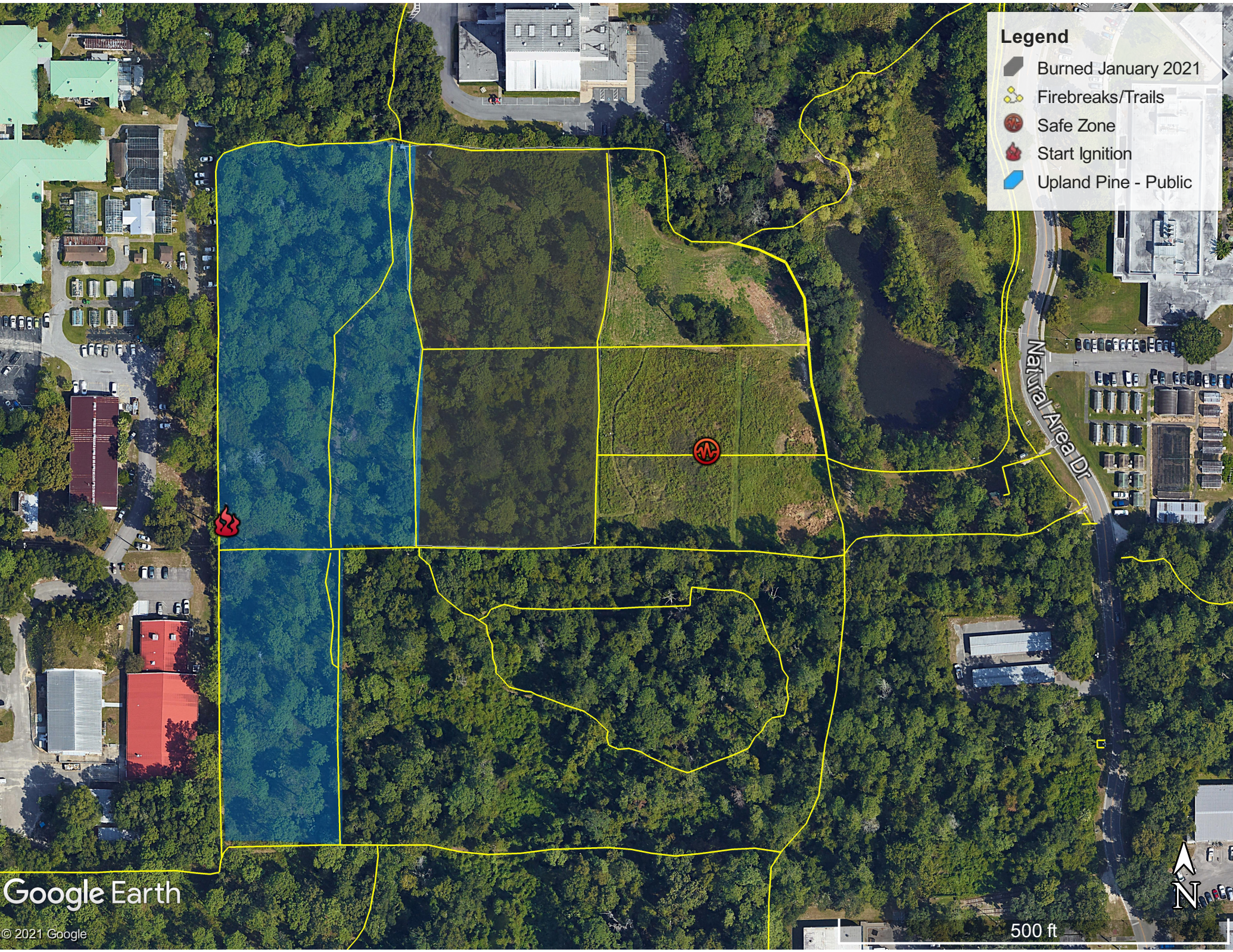
\$\$

FLZ340-152230-
Western Marion-
326 AM EDT Thu Jul 15 2021

	Today	Tonight	Fri
CLOUD COVER	Pcldy	McLEAR	McLEAR
CHANCE PRECIP (%)	20	0	20
WEATHER TYPE	Tstms	None	Tstms
TEMP (24H TREND)	91 (+2)	70 (-2)	92
RH % (24H TREND)	51 (-14)	99 (-1)	47

Legend

-  Burned January 2021
-  Firebreaks/Trails
-  Safe Zone
-  Start Ignition
-  Upland Pine - Public



Google Earth

© 2021 Google

500 ft



