

<b>PRESCRIBED BURN PRESCRIPTION</b>	
<a href="#">UF Natural Area Teaching Laboratory</a>	
<b>Compartment / Unit(s):</b> Research Plots	
<b>Burn Manager:</b> Gage Daniel J LaPierre	<b>Certification #:</b> 1410003
<b>Cell #:</b> 352-362-4846	<b>Customer ID #:</b> 20195049
<b>Landowner:</b> University of Florida	
<b>Address:</b> 1881 Natural Area Drive, Gainesville, Florida 32611	<b>Phone:</b> (352) 273-3901
<b>Date/Time Prescription Prepared:</b> 10:30AM 03/16/2023 Thursday	
<b>Planned Burn Ignition Date/Time:</b> 12:00PM 03/16/2023 Thursday	
<b>Site Information</b>	
<b>State District (Phone):</b> Wacasassa (352-395-4951)	
<b>County:</b> Alachua	<b>Section / Township / Range:</b> S4 T07S R19E
<b>Acres:</b> ~ 1 Acres (Total)	<b>Last Burned:</b> 5/26/2022
<b>Boundary Lines:</b> Description and distance(attach aerial photo indicating unit boundaries)	
Pavilion Slope	Retention Basin
N - Mowed Fire Break 129 ft	N - Mowed Fire Break 258 ft
W - Mowed Fire Break 76 ft	W - Mowed Fire Break 73 ft
S- Mowed Fire Break 142 ft	S- Mowed Fire Break 248 ft
E - Mowed Fire Break 74 ft	E - Mowed Fire Break 105 ft
<b>Community Type:</b> Disturbed Upland Pine	
<b>Overstory:</b> Loblolly Pine	
<b>Understory:</b> Pine Needles, Sparse Grasses and Forbs.	
<b>Soils:</b> Udorthents (Disturbed)	
<b>Topography:</b> Sloped Topography - 20% Incline along Western Edge of Pavilion Slope. Retention Basin Sloped along all sides.	
<b>Tons Fuel per Acre (Total/Available):</b> NA	
<b>General Purpose of Burn:</b> Enhance Public Area - Reduce Vegetation and Fuel Levels	
<b>Specific Burn Objectives:</b> >90% Understory Combustion	
<b>Smoke Sensitive Areas</b>	
	Veterans Administration Medical Center
	SW 34 Street
	Performing Arts Theatre
<b>Special Concerns</b>	Spot Overs
<b>Evaluation of Anticipated Impacts on Smoke Sensitive Areas</b>	Smoke Sensitive Areas should not be impacted due to light fuels and favorable dispersion index.
<b>Public Relations</b>	Contact All Neighbors & Fire Department

<b>Planned Burn Weather Conditions</b>		
	<b>Preferred</b>	<b>Forecasted</b>
<b>Wind Speed (mph)</b>	3 - 12 mph E N NE SE S	6 - 8 mph SE
<b>Transport Wind</b>	7 - 25 mph N NE SE S	8 - 9 mph SE
<b>Mixing Height</b>	1700' - 8000'	3800' - 4200'
<b>Sky Cover</b>	<50%	2% - 3%
<b>Daylight Dispersion</b>	35 - 80	39 - 42
<b>LOVRI</b>	<5	<1
<b>Temperature</b>	<100F	65F - 72F
<b>Rel Humidity</b>	30% - 60%	37% - 43%
<b>Fine Fuel Moisture</b>	5 - 12	6
<b>KBDI</b>	100 - 500	100 - 200
<b>Stability (Turner)</b>	>2	>2
<b>Planned Ignition Methodology</b>		
<b>Season/Timing:</b>	Spring	
<b>Technique(s):</b>	Backing Fire	
<b>Desired Flame Length/Intensity:</b>	<4', Low Intensity	
<b>Desired Rate of Spread</b>	1-3 chains per hour	
<b>Minimum Equipment and Staff:</b>	25 gal UTV. 200 gal Water Trailer pulled by pickup. Three Staff with Handtools.	
<b>Planned Contingencies &amp; Mopup</b>	Safe zone located east of burn unit in pavilion space.	
<b>Actual Weather Conditions</b> (attach NWS Fire Weather Forecast, additional hourly forecast)		
	<b>At Ignition</b>	<b>At Cessation</b>
<b>Wind Speed (mph)</b>		
<b>Wind Gust (mph)</b>		
<b>Transport Wind</b>		
<b>Mixing Height</b>		
<b>Sky Cover</b>		
<b>Daylight Dispersion</b>		
<b>Night Dispersion (8PM-7AM)</b>		
<b>Temperature</b>		
<b>Rel Humidity</b>		
<b>Fine Fuel Moisture</b>		
<b>KBDI</b>		
<b>Stability (Turner)</b>		

<b>Pre-Burn Checklist</b> (Initial)	
	all prescription requisites met
	authorization obtained
	necessary local contacts made (local fire department, adjacent landowners, etc.)
	burn warning signage posted at gate(s)
	all equipment and staff on site and functional
	all staff properly equipped (minimum PPE at discretion of burn manager)
<b>Crew Briefing</b> (Initial)	
	burn objectives
	burn boundaries
	hazards discussed (containment issues, terrain features, etc.)
	Assignments Made
	Ignition Methodology Discussed. Contingency Plan Discussed
	Equipment Location Noted (Fuel, Water, Tools, Vehicles, Vehicle Keys)
	Authority Confirmed and Communications Discussed
	Emergency Procedures Discussed (Safe Zones, Contact Information Distributed)
	Questions Requested
	Staff Given Opportunity to Decline Participation
	<b>Burn Manager Signature:</b>
	<b>Permit Number / Date:</b> 2023026009 (03-16-2023)
	<b>Permit Conditions (if any):</b> None
<b>Actual Ignition Methodology</b>	
	<b>Date:</b>
	<b>Technique(s):</b>
	<b>Flame Length/Intensity:</b>
	<b>Equipment and Staff:</b>
<b>BURN DE-BRIEF</b> (TIMING, PROBLEMS, FOLLOW-UP ACTIONS):\n	

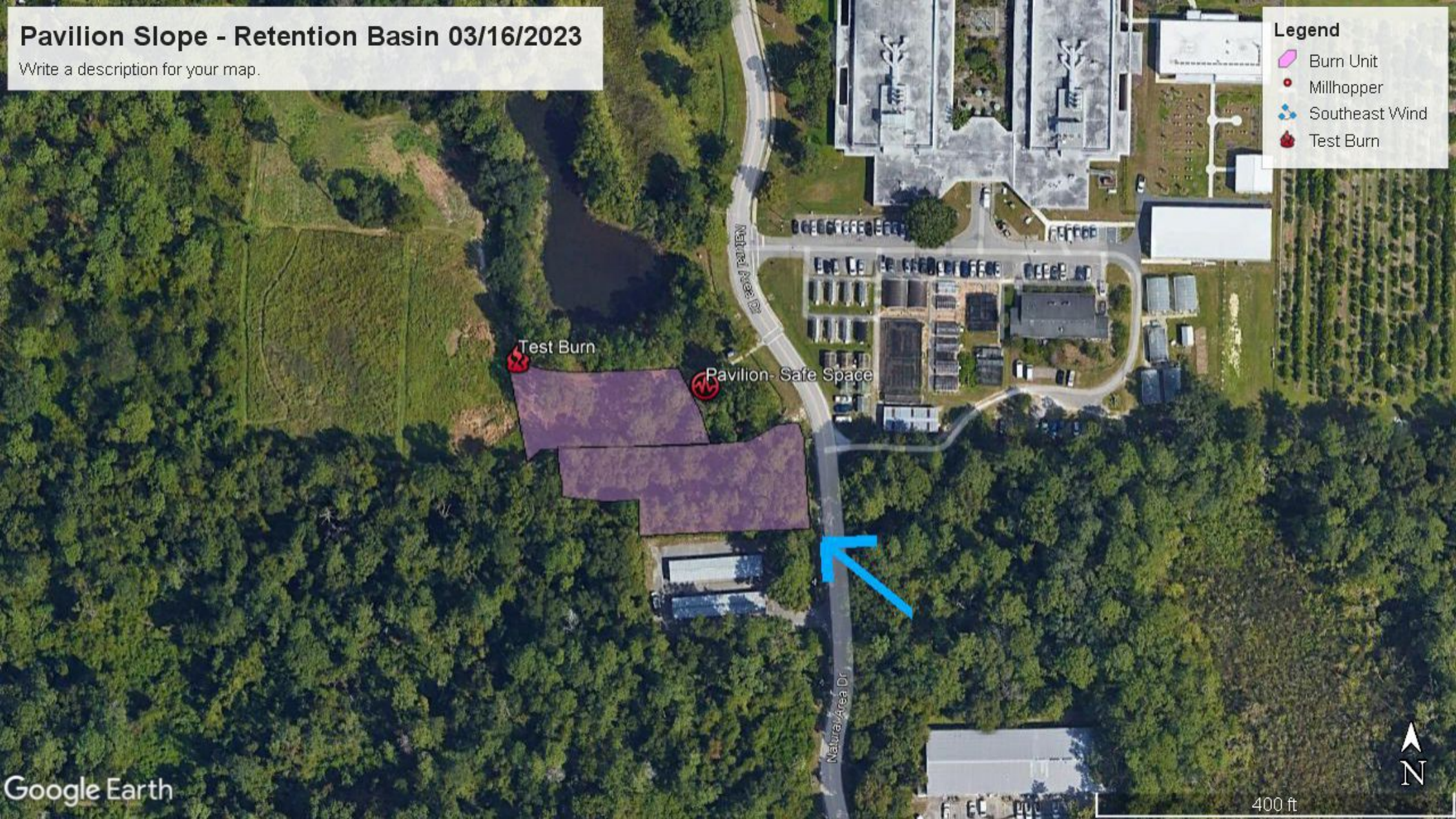
<b>POST-BURN MONITORING</b>	
<b>Following Day (Date):</b>	
<b>Overnight RH%:</b>	
<b>Overnight Wind Speed/Direction:</b>	
<b>Rainfall (inches):</b>	
<b>Smoke Drift Direction/Distance:</b>	
<b>Visible Flame?:</b>	
<b>Crown Tanning %:</b>	
<b>Crown Scorch %:</b>	
<b>Burn Coverage %:</b>	
<b>Estimated Duff Removal (inches):</b>	
<b>Following Month (Date):</b>	
<b>Rainfall (inches):</b>	
<b>Crown Cast %:</b>	
<b>Overstory Mortality %:</b>	
<b>Understory Mortality %:</b>	
<b>Following Year (Date):</b>	
<b>Rainfall (inches):</b>	
<b>Overstory Mortality %:</b>	
<b>Understory Mortality %:</b>	
<b>POST-BURN ANALYSIS</b>	
<b>Objectives Met?</b>	
<b>Suggestions for Improvement?</b>	

# Pavilion Slope - Retention Basin 03/16/2023

Write a description for your map.

**Legend**

-  Burn Unit
-  Millhopper
-  Southeast Wind
-  Test Burn



Test Burn

Pavilion- Safe Space

Natural Area Dr

Natural Area Dr



# Fire Weather Dashboard

 Help |  Change Domain |  Bookmark |  Legend

32607, Gainesville, FL, USA



[Request a Spot \(https://www.weather.gov/spot/request/\)](https://www.weather.gov/spot/request/)



Surface Front Forecast: Thu Mar 16  Fri Mar 17  Sat Mar 18

Table updated: 855 am EDT Thu. 3/16/2023 (Last Update: 119 minutes ago)

[Click for Fire Forecast: FLZ136](#)

[JAX Forecast Discussion](#)

3 miles SSW of Gainesville, FL (Elevation: 95 ft)

[Download Weekly Summary as PNG](#)

Gainesville, FL Weekly Summary	Thu Mar 16	Fri Mar 17	Sat Mar 18	Sun Mar 19	Mon Mar 20	Tue Mar 21	Wed Mar 22	Thu Mar 23
Max Temp, °F	76	82	72	63	64	69	76	82
Min Temp, °F	52	51	53	44	42	47	50	54
Max RH, %	74	96	100	86	83	96	96	100
Min RH, %	31	38	68	43	56	59	52	51
Max Wind, mph	8	15	15	13	13	15	12	13
Min Wind, mph	3	5	7	9	10	10	10	8
Max Wind Gust, time/dir.	11 AM ←	3 PM ↗	11 AM ↗	3 PM ↓	5 AM ↓	1 PM ←	11 AM ↗	1 PM ←
Max Wind Gust, mph	13	23	24	20	20	23	17	20
Min Wind Gust, mph	6	7	10	14	16	16	16	13
Max Cloud Cover, %	5	54	96	95	72	63	47	30
Min Cloud Cover, %	1	3	54	63	52	47	22	13
Max Prob. of Precip., %	0	14	91	42	27	27	16	11
Max LAL	1	1	2					
Max Mixing Height, ft	5200	5600	3900					
Min Mixing Height, ft	400	400	550					
Max Ventilation Rate, kt-ft	31	106	47					
Min Ventilation Rate, kt-ft	2	3	7					

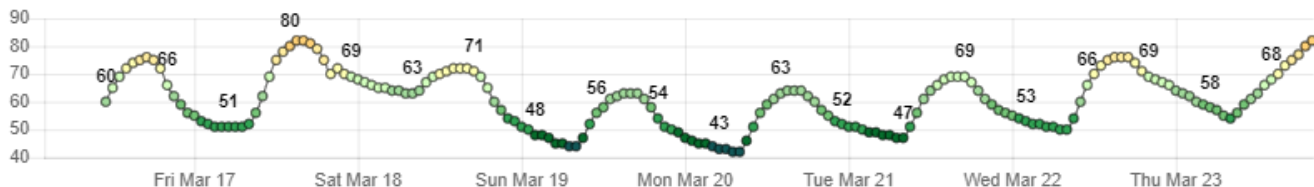
Max LVORI

3	7	7
---	---	---

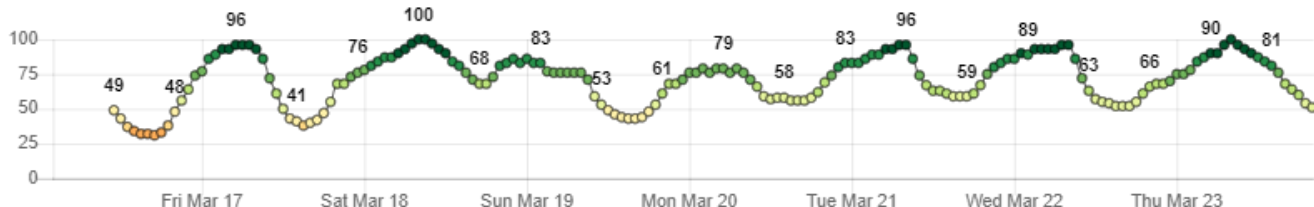
Hourly Table

Day of week:	3/16											Friday 3/17				
Time:	12PM	1PM	2PM	3PM	4PM	5PM	6PM	7PM	8PM	9PM	10PM	11PM	12AM	1AM	2AM	3A
Weather:	☀	☀	☀	☀	☀	☀	☀	☁	☁	☁	☁	☁	☁	☁	☁	☁
Temperature:	65	69	72	74	75	76	75	72	66	62	59	56	55	53	52	51
RH (%):	43	37	34	32	32	31	33	38	48	56	64	74	77	86	89	90
Wind Speed (mph):	8	8	7	7	7	7	6	5	3	3	3	3	5	5	6	6
Wind Gust (mph):	13	13	10	10	10	10	9	7	6	6	6	6	7	7	9	9
Wind Direction (°):	110	130	130	140	150	160	150	120	110	110	110	110	130	150	160	160
Wind Direction:	↙	↘	↘	↘	↘	↘	↘	↙	↙	↙	↙	↙	↘	↗	↗	↗
20 Ft. Wind Speed (mph):	7	7	6	6	6	6	5	3	3	3	3	3	3	3	5	5
20 Ft. Wind Direction (°):	110	130	130	140	150	160	150	120	110	110	110	110	130	150	160	160
20 Ft. Wind Direction:	↙	↘	↘	↘	↘	↘	↘	↙	↙	↙	↙	↙	↘	↗	↗	↗
Trans. Wind Speed (mph):	10	9	8	7	7	7	6	6	6	6	6	7	8	9	10	10
Trans. Wind Direction (°):	110	130	140	150	160	170	160	150	140	140	130	130	140	160	170	170
Trans. Wind Direction:	↙	↘	↘	↘	↘	↘	↘	↙	↙	↙	↙	↙	↘	↗	↗	↗
Prob. of Precip.:	0	0	0	0	0	0	0	0	0	0	0	0	0	0	0	0
Precip. Amount:	0.00															
Snow:	0.0															
Ice:	0.0															
Sky Cover:	2	2	2	2	2	2	3	4	5	4	3	3	3	3	4	4
Mixing Height (x100ft):	29	38	42	45	49	52	50	10	5	4	4	5	5	5	4	4
Vent. Rate (x1000 kt-ft):	26	30	29	27	29	31	25	5	2	2	2	3	3	4	4	4
Haines Index:	-	-	-	-	-	-	-	-	-	-	-	-	-	-	-	-
Lightning (LAL):	1	1	1	1	1	1	1	1	1	1	1	1	1	1	1	1
Visibility (mi.):	10	10	10	10	10	10	10	10	10	10	10	10	10	10	10	10
LVORI:	1	1	1	1	1	1	1	2	2	3	3	3	5	5	6	6
Dispersion Index (NDFD):	39	42	39	39	41	42	36	8	2	2	3	3	4	4	4	5
Stability (Turner):	2	2	2	2	2	2	3	5	6	6	6	6	6	6	6	6

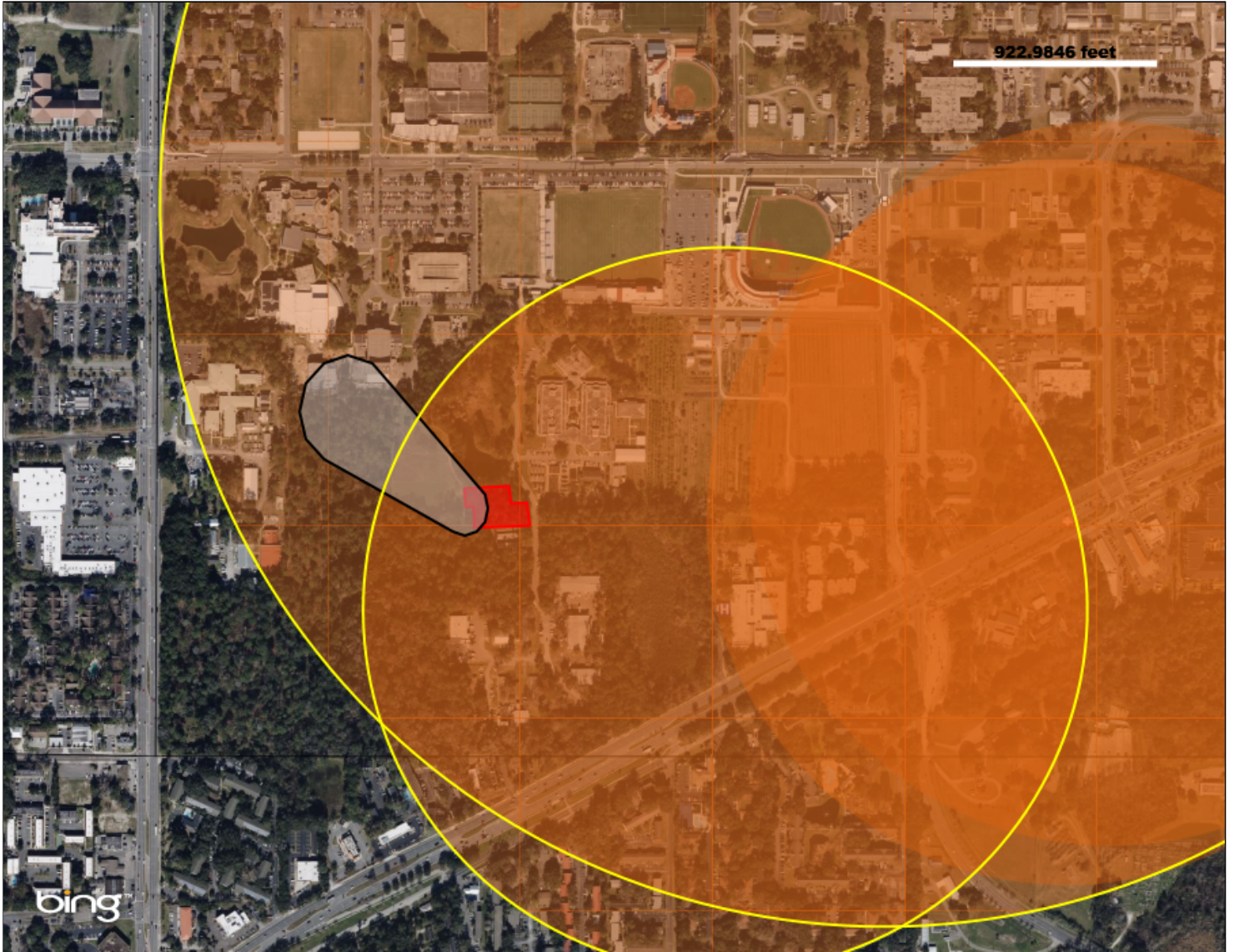
Hourly Graphs  
Temperature, °F



Relative Humidity, %



Wind Speed/Direction/Gust, mph



**Smoke Sensitive Buffers (2)**

**Name** Veterans Administration Medical Center  
**Type** AIRPORT

**Name** SELECT SPECIALTY HOSPITAL - G'VILLE  
**Type** HOSPITAL