

Prescribed Burn Prescription	
UF Natural Area Teaching Laboratory	
Compartment / Unit(s): Upland Pine - Restricted Area	
Burn Manager: Gage Daniel J LaPierre	Certification #: 1410003
Cell #: 352-362-4846	Customer ID #: 20195049
Landowner: University of Florida	
Address: 1881 Natural Area Drive, Gainesville, Florida 32611	Phone: (352) 273-3901
Date/Time Prescription Prepared	10:00AM 06/30/2023 Friday
Planned Burn Ignition Date/Time	12:00PM 06/30/2023 Friday
Site Information	
State District (Phone): Wacasassa (352-395-4951)	
County: Alachua	Section / Township / Range: S12 T10S R19E
Acres: ~ 7.0 Acres (Total)	Last Burned: 4/19/2022
Boundary Lines: Description and distance(attach aerial photo indicating unit boundaries)	
North Unit	South East Unit
N - Mowed Fire Break 740 ft	N - Mowed Fire Break 190 ft
W - Mowed Fire Break 330 ft	W - Mowed Fire Break 350 ft
S - Mowed Fire Break 590 ft	S - Mowed Fire Break 205 ft
E - Mowed Fire Break 400 ft	E - Mowed Fire Break 385 ft
Natural Community Type	Upland Pine
Overstory	Longleaf Pine
Understory	Pine Needles, Sparse Grasses and Forbs.
Soils	Apoka (Ultisols)
Topography	Neutral Topography
Tons Fuel per Acre (Total/Available): NA	
General Purpose of Burn:	Enhance Public Area - Reduce Vegetation and Fuel Levels
Specific Burn Objectives:	>90% Understory Combustion
Smoke Sensitive Areas	
	Veterans Administration Medical Center
	SW 34 Street
	Performing Arts Theatre
	Florida Museum Special Collections Building
	UF Health Rehab Hospital
Special Concerns	
	Spot Overs, Kiosks, Wifi Emitters
Evaluation of Anticipated Impacts on Smoke Sensitive Areas	
	Smoke sensitive areas should not be impacted due to light fuels and favorable dispersion index. Monitoring smoke disersion will be a priority throughout burn.
Public Relations	
	Contact all neighbors & fire department.

Planned Burn Weather Conditions		
	Preferred	Forecasted
Surface Wind Speed (mph)	3 - 15 mph E N NE	7 - 9mph E NE
Transport Wind (mph)	6 - 25 mph E N NE	9 - 12 mph E NE
Mixing Height (feet)	1700' - 8000'	5000' - 6500'
Sky Cover %	<60%	1% - 15%
Daylight Dispersion	35 - 90	56 - 83
Night Dispersion	>1	>2
Temperature (F)	<100F	91F - 95F
Rel Humidity (%)	30% - 60%	43% - 54%
Fine Fuel Moisture	5 - 12	7
KBDI	100 - 500	100 - 200
Planned Ignition Methodology		
Season/Timing:	Summer	
Technique(s):	Backing Fire, Heading Fire, Flanking Fire	
Desired Flame Length/Intensity:	<4', Low Intensity	
Desired Rate of Spread	1-3 chains per hour	
Minimum Equipment and Staff:	20 gal gator UTV. 150 gal water trailer pulled by pickup. Three staff with handtools.	
Planned Contingencies & Mopup	Safe zone located east of burn unit in pavilion space.	
Actual Weather Conditions (attach NWS Fire Weather Forecast, additional hourly forecast)		
	At Ignition	At Cessation
Wind Speed (mph)		
Wind Gust (mph)		
Transport Wind		
Mixing Height		
Sky Cover		
Daylight Dispersion		
Night Dispersion (8PM-7AM)		
Temperature		
Rel Humidity		
Fine Fuel Moisture		
KBDI		
Stability (Turner)		

Pre-Burn Checklist (Initial)	
	all prescription requisites met
	authorization obtained
	necessary local contacts made (local fire department, adjacent landowners, etc.)
	burn warning signage posted at gate(s)
	all equipment and staff on site and functional
	all staff properly equiped (minimum PPE at discretion of burn manager)
Crew Briefing (Initial)	
	burn objectives
	burn boundaries
	hazards discussed (containment issues, terrain features, etc.)
	Assignments Made
	Ignition Methodology Discussed. Contingency Plan Discussed
	Equipment Location Noted (Fuel, Water, Tools, Vehicles, Vehicle Keys)
	Authority Confirmed and Communications Discussed
	Emergency Procedures Discussed (Safe Zones, Contact Information Distributed)
	Questions Requested
	Staff Given Opportunity to Decline Participation
	Burn Manager Signature:
	Permit Number / Date: 2023049410 06/30/2023
	Permit Conditions (if any): None
Actual Ignition Methodology	
	Date:
	Technique(s):
	Flame Length/Intensity:
	Equipment and Staff:
BURN DE-BRIEF (TIMING, PROBLEMS, FOLLOW-UP ACTIONS):\	

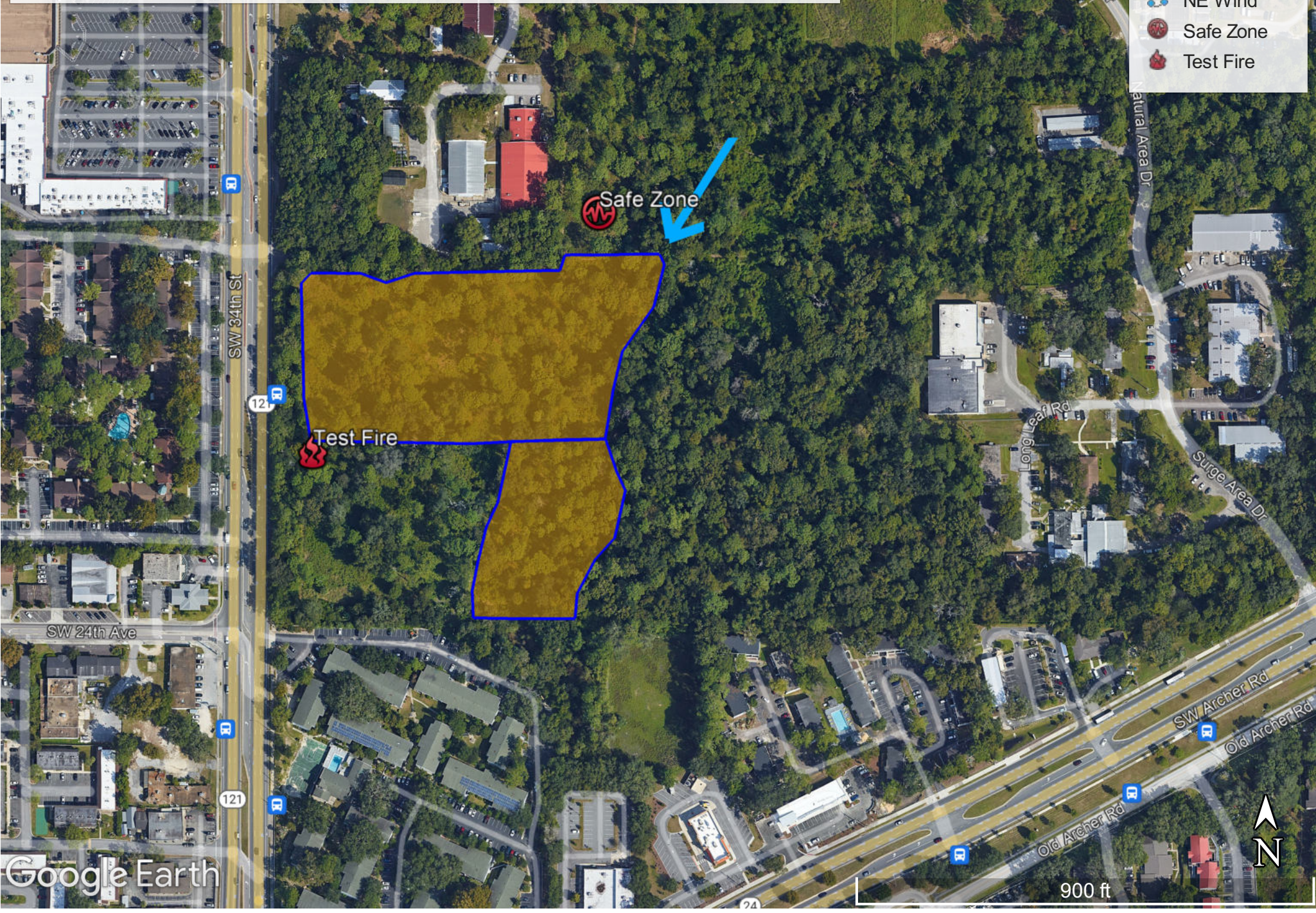
POST-BURN MONITORING							
Following Day (Date):							
Overnight RH%:							
Overnight Wind Speed/Direction:							
Rainfall (inches):							
Smoke Drift Direction/Distance:							
Visible Flame?:							
Crown Tanning %:							
Crown Scorch %:							
Burn Coverage %:							
Estimated Duff Removal (inches):							
Following Month (Date):							
Rainfall (inches):							
Crown Cast %:							
Overstory Mortality %:							
Understory Mortality %:							
Following Year (Date):							
Rainfall (inches):							
Overstory Mortality %:							
Understory Mortality %:							
POST-BURN ANALYSIS							
Objectives Met?							
Suggestions for Improvement?							

Burn Map - UF NATL - Upland Pine - Restricted Blocks

06/30/2023 ~6.85 Acres 121

Legend

-  Burn Blocks
-  NE Wind
-  Safe Zone
-  Test Fire



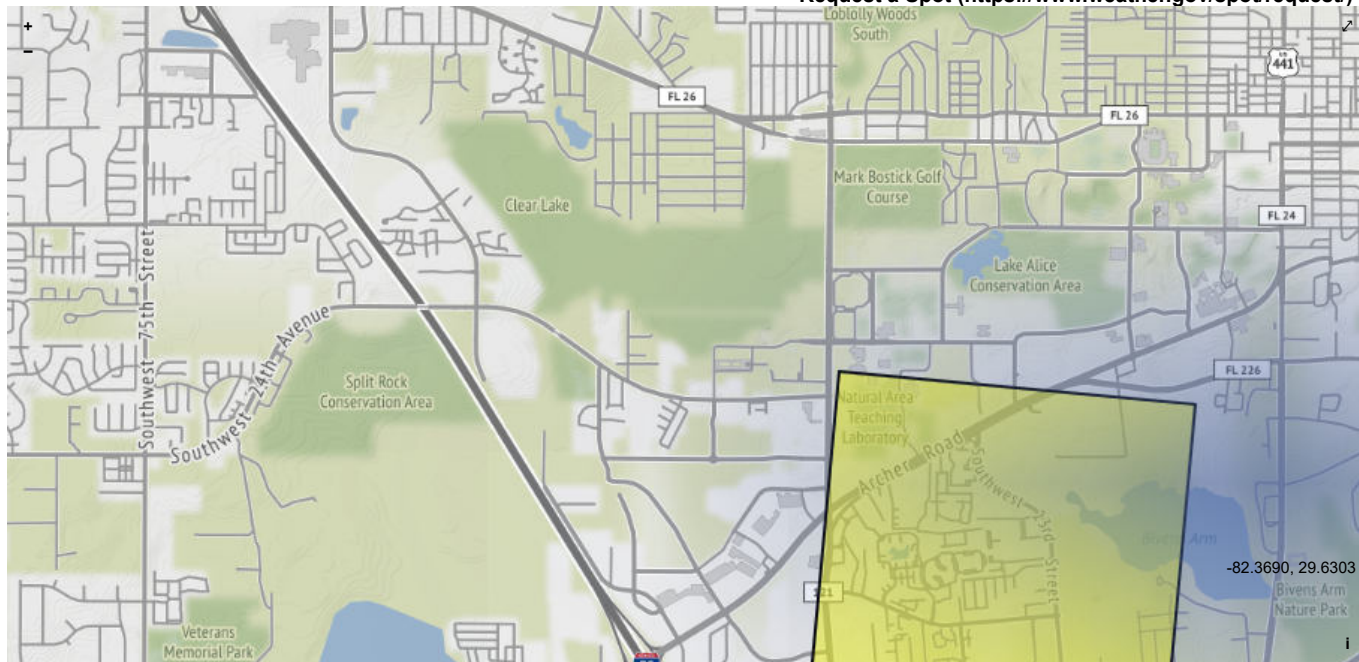
Fire Weather Dashboard

 Help |  Change Domain |  Bookmark |  Legend

32611, Gainesville, FL, USA



Request a Spot (<https://www.weather.gov/spot/request/>)



Surface Front Forecast: Fri Jun 30 Sat Jul 1 Sun Jul 2

Table updated: 950 am EDT Fri. 6/30/2023 (Last Update: 36 minutes ago)

Click for Fire Forecast: FLZ136

JAX Forecast Discussion

3 miles SSW of Gainesville, FL (Elevation: 95 ft)

[Download Weekly Summary as PNG](#)

Gainesville, FL Weekly Summary	Fri Jun 30	Sat Jul 1	Sun Jul 2	Mon Jul 3	Tue Jul 4	Wed Jul 5	Thu Jul 6	Fri Jul 7
Max Temp, °F	95	96	97	95	96	96	95	94
Min Temp, °F	78	71	73	74	74	73	74	73
Max RH, %	70	93	97	97	100	100	100	100
Min RH, %	43	45	48	53	51	51	53	54
Max Dewpoint, °F	73	74	75	75	76	76	76	76
Min Dewpoint, °F	67	68	70	73	74	73	74	73
Max Wind, mph	9	7	8	9	9	8	8	9
Min Wind, mph	3	2	2	3	3	3	3	3
Max Wind Gust, time/dir.	2 PM ↘	1 PM ↗	3 PM ↗	4 PM ↗	5 PM ↗	4 PM ↗	4 PM ↗	12 PM ↗
Max Wind Gust, mph	14	10	13	14	14	13	13	14
Min Wind Gust, mph	6	3	3	6	6	6	6	6
Max Cloud Cover, %	15	46	58	58	56	56	70	70
Min Cloud Cover, %	0	3	16	37	36	39	47	54
Max Prob. of Precip., %	10	22	35	41	47	52	61	66
Max LAL	1	2	3					
Max Mixing Height, ft	6500	5000	7200					
Min Mixing Height, ft	450	400	450					

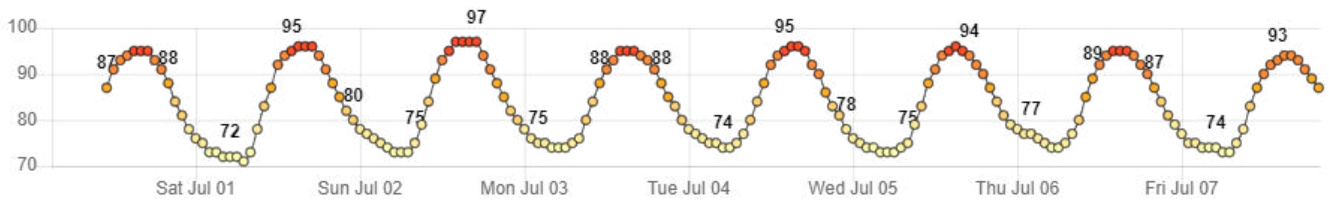
Max Ventilation Rate, kt-ft	65	30	43
Min Ventilation Rate, kt-ft	4	1	2
Max LVORI	3	7	9

Hourly Table

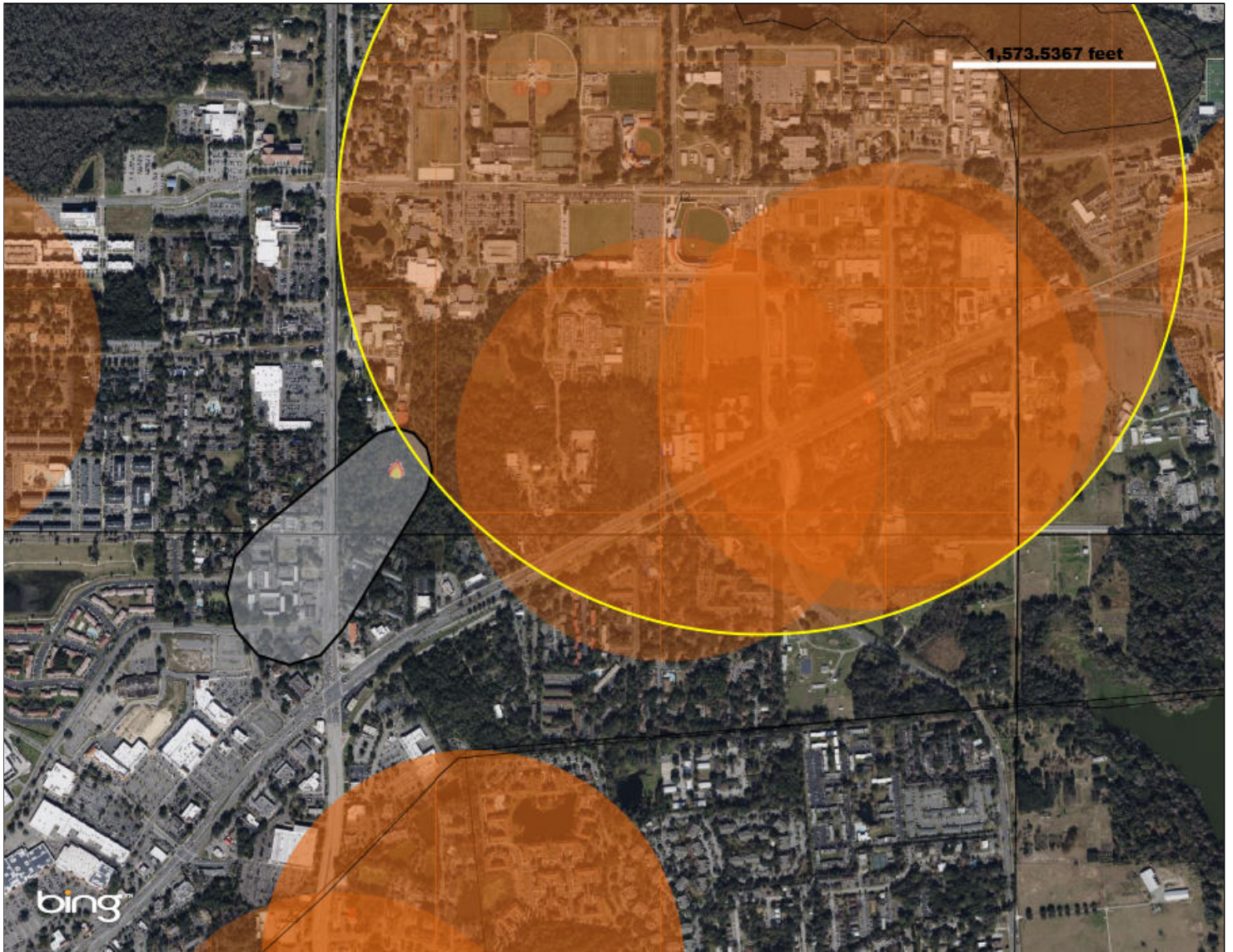
Day of week:	Friday 6/30														Saturday
Time:	10AM	11AM	12PM	1PM	2PM	3PM	4PM	5PM	6PM	7PM	8PM	9PM	10PM	11PM	12AM
Weather:	☀	☀	☀	☀	☀	☀	☀	☀	☀	☀	☁	☁	☁	☁	☁
Temperature, °F:	84	87	91	93	94	95	95	95	93	91	88	84	81	78	76
RH (%):	70	61	54	49	46	43	43	43	44	47	50	57	63	69	76
Dewpoint, °F:	73	72	72	71	70	69	69	69	68	68	67	67	67	67	68
Wind Speed (mph):	3	6	7	8	9	9	9	9	9	9	7	6	6	5	3
Wind Gust (mph):	6	9	10	13	14	14	14	14	14	14	10	9	9	7	6
Wind Direction (°):	70	50	50	40	40	40	50	50	60	80	90	100	100	110	110
Wind Direction:	←	↘	↘	↘	↘	↘	↘	↘	↘	↘	←	←	←	←	←
20 Ft. Wind Speed (mph):	3	5	6	7	8	8	8	8	8	8	6	5	5	3	3
20 Ft. Wind Direction (°):	70	50	50	40	40	40	50	50	60	80	90	100	100	110	110
20 Ft. Wind Direction:	←	↘	↘	↘	↘	↘	↘	↘	↘	↘	←	←	←	←	←
Trans. Wind Speed (mph):	7	8	9	10	12	12	12	12	12	12	12	12	10	9	8
Trans. Wind Direction (°):	70	50	40	40	40	40	50	60	70	90	100	100	110	110	110
Trans. Wind Direction:	←	↘	↘	↘	↘	↘	↘	↘	↘	↘	←	←	←	←	←
Prob. of Precip.:	5	5	6	7	7	9	10	7	5	4	3	3	5	5	5
Precip. Amount:	0.00			0.00						0.00					
Snow:	0.0	0.0	0.0	0.0	0.0	0.0	0.0	0.0	0.0	0.0	0.0	0.0	0.0	0.0	0.0
Ice:	0.0	0.0	0.0	0.0	0.0	0.0	0.0	0.0	0.0	0.0	0.0	0.0	0.0	0.0	0.0
Sky Cover:	0	1	1	2	5	12	12	15	11	8	6	2	5	2	3
Mixing Height (x100ft):	26	37	50	59	64	65	65	63	51	32	7	5	5	5	5
Vent. Rate (x1000 kt-ft):	16	26	40	53	64	65	65	63	51	32	7	5	4	4	3
Haines Index:	-	-	-	-	-	-	-	-	-	-	-	-	-	-	-
Lightning (LAL):	1	1	1	1	1	1	1	1	1	1	1	1	1	1	1
Visibility (mi.):	10	10	10	10	10	10	10	10	10	10	10	10	10	10	10
LVORI:	3	1	1	1	1	1	1	1	1	1	2	3	3	3	4
Dispersion Index (NDFD):	22	38	56	70	79	82	83	79	65	43	5	5	5	4	4
Stability (Turner):	1	2	2	2	2	2	3	4	5	6	6	6	6	6	6

Configure Plot Order
 Configure Plot Look

Hourly Graphs
Temperature, °F



Relative Humidity, %



Smoke Sensitive Buffers

Name Veterans Administration Medical Center

Type AIRPORT